



# SANDERLING TRACKS

NEWSLETTER OF THE FRIENDS OF KOHLER-ANDRAE STATE PARK

[www.friendsfokohler-andrae.com](http://www.friendsfokohler-andrae.com)

Winter 2011-12



## SUPERINTENDENT'S NOTES

By Jim Buchholz

Winter is a time of reflection for me as I work with our staff and park volunteers to make plans for yet another busy summer season here at Kohler-Andrae. When I look back to the start of my career in the Wisconsin State Park System, I'm always amazed how much things have changed.

Even over the past 25 years that I've served as your park superintendent at Kohler-Andrae, much has changed here as well. When I arrived back in 1986, Kohler-Andrae's attendance was already very high with nearly 280,000 visitors a year. Since then, park attendance has dramatically increased to nearly 425,000 visitors today. Camping has also increased quite a bit from back then from 43,500 camper days in 1986, to over 66,000 today.

Park facilities have also expanded in the past 25 years. Two new shower/restroom facilities were built in the campground along with a new RV dump station. In the last few years, an accessible cabin, dozens of new electrical service pedestals, and a brand new 30-unit campground have been added. Several new trails were also developed over the years including the Marsh Boardwalk, Marsh Trail, a paved bicycle trail, the Black River Trail, The Woodland Dunes Nature Trail, and the Creeping Juniper Nature Trail. A new playground and an outdoor shelter building were added in the picnic area, and most recently, a fishing pond was constructed for young and old anglers alike.

The Kohler Dunes State Natural area was also expanded from only 25 acres in 1986, to more than 285 acres today. In addition, a 2-mile cordwalk

hiking trail was installed through this unique sand dune area. In the year 2,000, another big change occurred when the park's main entrance was moved to the north end of the park and a new park office/visitor contact station was built.

Of course, along with all these improvements, new facilities and increased visitor use, came a much higher workload for park staff, which unfortunately did not increase in size. To the rescue came two of the most important changes within the last 25 years – the birth of the park's first citizen support group for the park, the Friends of Kohler-Andrae in 1987 and a major increase in the number of park volunteers. Back in 1986, we had 29 volunteers that donated 429 hours of service to the park. By 2011, this number had increased dramatically to 570 volunteers who donated 7,169 hours of service to the park.

Today, dedicated volunteers serve as camp hosts, Nature Center hosts, conservation and maintenance workers, assist clerical staff in the park office, maintain trail systems, and provide many other services throughout the park. The Friends of Kohler-Andrae have taken over the firewood and ice sales, the camp laundry, tipi rental, concession food sales, and clothing/souvenir sales offered in the park. In return, the friends donate their profits back into the park to help fund interpretive programs, improvements in recreational offerings and help to fund matching grants with the state to build new facilities such as the accessible cabin and the new fishing pond.

Thanks to the efforts of the Friends of Kohler-Andrae and all of our volunteers, the park is able to continue to provide our guests with an outstanding quality outdoor experience when they visit us year

after year. Everyone needs friends and I feel fortunate to have so many willing volunteers who continue to serve without compensation other than the good feeling of helping to make Kohler-Andrae one of the Best State Parks in Wisconsin.

## **PRESIDENT'S NOTES**

**By Jim Mohr**

Winter has come and the park is much quieter now than last summer. The unseasonably warm weather is allowing hikers and dog walkers to enjoy the park even in December while the cross-country skiers and those with snow shoes are frustrated by the warm weather. A new trail, just for snow shoeing, has been added this winter. Let's hope we get some snow for our two winter candlelight ski/hikes.

Our friends group has applied for a Stewardship Fund match grant, and we are patiently waiting to hear if our request is granted, to add thirty more parking stalls to the Nature Center parking lot. The present lot fills quickly on summer weekends.

Although it is winter, Doris Kultgen is working at setting up interpretive programs for the coming summer. If you are willing to or if you know of someone that is willing to do a program at the park, please call the park office or contact Doris at; [Doris.Kultgen@dnr.state.wi.us](mailto:Doris.Kultgen@dnr.state.wi.us) Also, when you do see her, be sure to say Thank You for the excellent job she has done for us in the past.

There still are volunteer opportunities in winter. The conservation team repairs and paints picnic tables and does other maintenance & repair tasks all winter long. Contact the park office if you are interested.

Former assistant manager at Kohler-Andrae, Kelli Bruns, who left to become Superintendent at Willow River State Park, has moved on and now is Superintendent at Peninsula State Park. Congratulations Kelli and best wishes in your new position.

I am looking forward to seeing many of you at one of the candlelight ski/hike events on Jan. 14 and Feb. 11. Remember; the best time to visit our beautiful park is whenever you get the chance.

## **VOLUNTEER NOTES**

**By June Platz**

Just think, it will be January in a few days; how quickly time flies. Our first Ski Hike will be on Saturday, January 14th. Let's hope there is good skiing snow by that time. And we mustn't forget the new snowshoe trail. That sounds like fun, too.

Anyway, the Friends of Kohler Andrae will be hosting the refreshment room and will need such treats as bars and cookies. The skiers and hikers are always appreciative of the delicious treats you bring. The friends provide the popcorn and the drinks, hot and cold cider, hot chocolate and just plain water. They get a chance to warm up a bit in the snack room or in front of the fire before they head for home or go around the trails again.

Please let me know if you need to have your treats picked up. Call at 565-2577 or e-mail me at [jrp.catbird@tds.net](mailto:jrp.catbird@tds.net).

Don't forget the February hike on the 11th!

Happy New Year!

## E Newsletter

You can receive the newsletter via e mail instead of by snail mail. It would save the Friends group the money spent on printing and postage. The e newsletter arrives 3-4 days sooner than snail mail. If you are interested, send me an e mail at:

**[jimohr@aol.com](mailto:jimohr@aol.com)**. Be sure to put **e newsletter** in the subject line so it gets past my spam filter

## WAX CANDLES NEEDED

We need your used candles to make fire starters which we sell to campers. We have enough other supplies but are running low on wax to make them. Any used candles will do, even those in glass containers. Please bring your candles to the park office.

### Officers and Board Members

|  |          |
|--|----------|
| Jim Mohr (President)<br>(Newsletter)                 | 452-6550 |
| Fran Grandlic (Vice President)                       | 458-3934 |
| Mary Butts (Secretary)                               | 458-4518 |
| Charmaine Mohr (Treasurer)<br>(Newsletter Assistant) | 452-6550 |
| June Platz (Volunteer Coordinator)                   | 565-2577 |
| Tom Butts  | 458-4158 |
| Keith Herbst   | 452-0833 |
| Gary Boldt   | 457-2946 |
| Sue Meyer  | 457-4329 |
| Bryan Casper   | 917-9526 |
| Ted Bergstrom  | 208-2847 |
| Mary Lutzke  | 458-2075 |

Board meetings are held on the fourth Monday of the month at 7:00 PM at the Park office. Guests are welcome. *Only board members can make a motion or vote at board meetings.*

*Kohler-Andrae State Park*

*Winter Candlelight Ski/Hike*

*January 14, 2012*

*6:00 – 9:00 PM*

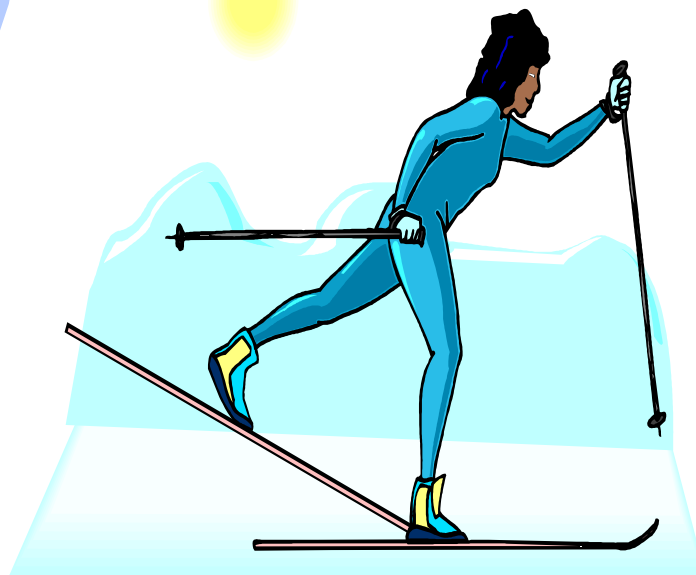


**JOIN US FOR A HIKE AND SKI ON THE 2-MILE  
WOODED SKI TRAIL LIT BY TIKI TORCHES**

**WARM UP AND ENJOY REFRESHMENTS AT THE  
PARK SHELTER BUILDING**

**PLEASE, NO SLEDS OR PETS ON THE HIKE**

**NEW THIS YEAR, SNOW SHOE TRAIL**



**Vehicle admission Sticker required**

*Kohler-Andrae State Park*  
*Winter Candlelight Ski/Hike*

*February 11, 2012*

*6:00 – 9:00 PM*

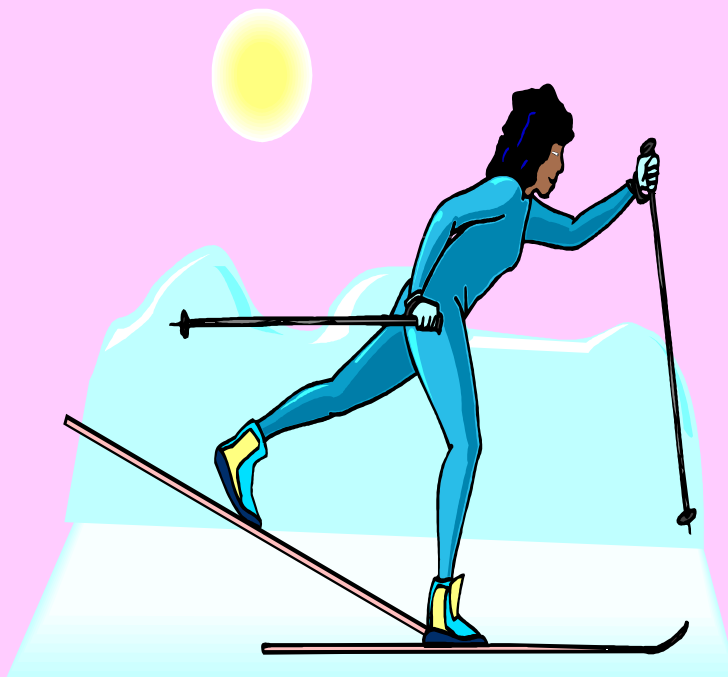


**JOIN US FOR A HIKE AND SKI ON THE 2-MILE  
WOODED SKI TRAIL LIT BY TIKI TORCHES**

**WARM UP AND ENJOY REFRESHMENTS AT THE PARK  
SHELTER BUILDING**

**PLEASE, NO SLEDS OR PETS ON THE HIKE**

**NEW SNOWSHOE TRAIL**



**Vehicle admission Sticker required**

**Friends of Kohler-Andrae State Park**  
**Kohler-Andrae State Park**  
**1020 Beach Park Lane**  
**Sheboygan, WI 53081**

PLEASE ENROLL ME IN THE FRIENDS OF KOHLER-ANDRAE ASSOCIATION

Name\_\_\_\_\_

\*Please check

Street\_\_\_\_\_

\_\_\_ General Membership \$10.00

City\_\_\_\_\_ State \_\_\_ Zip\_\_\_\_\_

\_\_\_ Family Membership \$15.00

I would like to receive the newsletter via Email \_\_\_\_\_

\_\_\_ Life Membership \$250.00

\_\_\_ Donation \$\_\_\_\_\_

Telephone \_\_ (\_\_\_\_) \_\_\_\_\_

E mail \_\_\_\_\_

Amount of check \$\_\_\_\_\_ payable to the Friends of Kohler-Andrae

\_\_\_ Renewal \_\_\_ New Membership Your cashed check will serve as your receipt

Membership Year is from May 1 thru April 30

Mail to: Friends of Kohler-Andrae, Treasurer, 913 St. Clair Ave., Sheboygan, WI 53081